



South Devon  
National  
Landscape

# Explorer

Discover South Devon National Landscape

A woman with long blonde hair, wearing a striped t-shirt and dark shorts, is walking a black dog on a leash along a paved path. The path is bordered by a stone wall on the right, which overlooks a river. The river is surrounded by lush green trees and foliage. The scene is bright and sunny.

A guide on where to go and  
what to see in the South  
Devon National Landscape

**Including Events**  
**April - October 2026**

# Explore and Enjoy

Welcome to our 2026 Explorer packed full of ideas to get out and enjoy the South Devon National Landscape.

15% of the land in England is within a National Landscape and there are 46 National Landscapes to fall in love with!



First time or 91st time, you're always welcome



**South Devon**  
National  
Landscape

66% of people in England live within half an hour's journey time of a National Landscape - if that's you then why not make 2026 the year you delve into the **'natural beauty'** of South Devon National Landscape.

The lush green valleys and picturesque estuaries create a peaceful, unspoiled environment. Charming coastal settlements like Salcombe and Dartmouth add a touch of charm to the rugged beauty. Whether you're a fan of rugged coastal walks, quiet river valleys, or seeking out local food and drink, South Devon offers an array of opportunities to explore and enjoy:

- Download a walk from the website - there are over 35 to choose from
- Join an event - ranging from walks and talks to crafts and theatre.
- Visit one of our heritage sites - castles and ruins
- Sample some local produce - visit a farmers market, farm shop or café.
- Sign up to volunteer and make a real difference.

## Management Plan Consultation

Our current Management Plan covers the period 2019-2024 (extended to 2026) and is now due for review.

Every five years, we create a Management Plan to help guide the work and activities of all organisations, groups and individuals with a responsibility or interest in the area.

This statutory document defines what makes it special, identifies the key issues facing this special place, and sets out our vision and priorities for conserving and enhancing its natural beauty for the next 5 years. The draft Plan public consultation is open from 2nd April – 27th May. You can give us your views by completing the survey follow the link from our home page:

[www.southdevon-nl.org.uk/](http://www.southdevon-nl.org.uk/)

# Explore like the wind



With 60 miles (96km) of the South West Coast Path in the South Devon National Landscape and hundreds of miles of rights of way criss-crossing the area, one of the best ways of exploring is on foot.

The South Devon National Landscape website has over 35 walks you can download for free. There is a huge variety to choose from; some suitable for seasoned walkers, others for those who like an extended stroll. They range in length from 2 to 12 miles and include details of facilities and access as well as information on wildlife, archaeology and history. You can also join a guided walk - see our events section P21-35.

## Geocaches in the National Landscape

20 geocaches have been placed along established walks in the National Landscape; however, prepare to go off the beaten track to hunt for the treasure!

[www.southdevon-nl.org.uk/geocaching](http://www.southdevon-nl.org.uk/geocaching)



## Walking the Coast Path

Britain's longest trail. The South West Coast Path extends to 630 miles of which 60 are in the South Devon National Landscape from Berry Head in Brixham to Jennycliff in Plymouth. The path is well waymarked and a variety of guides cover the section. You can also download day walks from [www.southwestcoastpath.org.uk](http://www.southwestcoastpath.org.uk) or guides are available from local information centres. A great way of experiencing some of the most spectacular views the area has to offer.

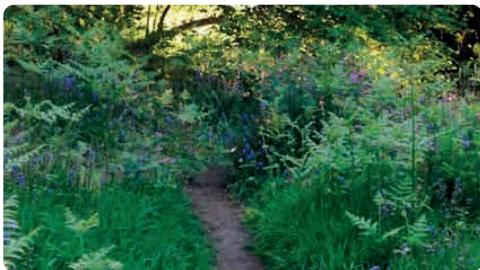
## Other trails



**The Dart Valley Trail** links Dartmouth to Totnes and Greenway to Kingswear, offering 17 miles (27km) of glorious walking linked handily to buses,

ferries and steam trains. This means you can walk all parts of the trail

- Circle the lower Dart from Dartmouth to Dittisham and Greenway to Kingswear using the ferries (9m, 14km)
- Use the Dartmouth - Dittisham ferries and walk just one side of the route (4.5m, 7km)
- Walk from Totnes to Dittisham (8-9m, 14km) and catch the ferry to Dartmouth then a cruise boat back.



**The Avon Estuary Walk** links Bigbury-on-Sea to Bantham, via Aveton Gifford, making a 9 mile (14km) walk if you use the River Avon ferry. The ferry has restricted operating hours, so try to check the times beforehand and include the ferry crossing early in your walk, so that you aren't rushing later on (see p9).



**The Greenway walk** links the National Trust's Greenway Estate to areas of nearby Paignton offering visitors a 'green' way to arrive! The 7 mile (11km) trail can

be joined in Broadsands, Galmpton and Churston and offers the best views of Torbay's coastline and spectacular Dart Estuary in one walk.



## Further information

**South West Coast Path National Trail**

[www.southwestcoastpath.org.uk](http://www.southwestcoastpath.org.uk)

**The Ramblers Association**

[www.ramblers.org.uk](http://www.ramblers.org.uk)

**Dartmoor National Park**

[www.dartmoor.gov.uk](http://www.dartmoor.gov.uk)

**Devon County Council**

[www.explored Devon.info/category/activities/walk/](http://www.explored Devon.info/category/activities/walk/)

# Out and About

## Car free and care free ...



### Buses

For bus routes and timetable enquiries, please call traveline or refer to the website for up to date information.

**[www.travelinesw.com](http://www.travelinesw.com)**

or download the Traveline app

**0871 200 22 33**  
**(0700 to 2000 daily)**

Calls from landlines cost  
12p per minute.

Bus timetables available  
from local information  
centres.



### Park and Ride

#### Dartmouth

A3122 Dartmouth outskirts  
TQ6 9LW. For up-to-date operating  
times and prices, go to  
[www.southhams.gov.uk](http://www.southhams.gov.uk)

On dates when the seasonal Park  
and Ride service is not operating:

- Reduced parking fees apply.
- Stagecoach South West's 92 bus service will pull into the Park and Ride car park. Bus tickets will need to be purchased on board.

#### Salcombe

A381 Salcombe outskirts.  
TQ8 8EL. For up-to-date operating  
times and prices, go to:  
[www.salcombetowncouncil.gov.uk](http://www.salcombetowncouncil.gov.uk)

When there is no seasonal service  
from this car park, the regular 164  
bus into town can be picked up at  
the bus stop on the Main Road over  
at the far corner of the car park. It is  
also possible to walk into town.



## Cycling

Cycling in South Devon provides access to some of the best bits of the area, but the hills can be a bit challenging! There are a number of e-bike hire centres across the National Landscape which can help with our inclines - search online if you fancy trying one out.

## Routes to try

Totnes is a good base to cycle from.

### Totnes to Dartington

This is a lovely route for families with young children alongside the river. It runs for two miles alongside the River Dart and by Queens Marsh and Bidwell Brook on the Dartington Hall Estate. Refreshments are available in Totnes or at The Cider Press Centre.

### Totnes to Ashprington

Part of the Dart Valley Trail, this hilly route is along ancient lanes, water meadow, marshland and quiet woods. There are lovely views of the River Dart. Approximately 6 miles round trip.



## Horse Riding

Riders can explore a network of bridleways, green lanes and quiet country roads, many linking villages, valleys and coastal viewpoints. In total, the area contains around 38 km of public bridleways and about 67 km of historic green lanes, providing off-road routes that are ideal for hacking and longer circular rides.



## Trains

For mainline enquiries about times and fares contact 03457 484950 or go to [www.nationalrail.co.uk](http://www.nationalrail.co.uk)

### Steam railways

A lovely way to appreciate the varied landscape of the area. Steam trains run along the spectacular coast from Paignton to Kingswear for Dartmouth via the passenger ferry. Call Paignton station 01803 555872 or visit [www.dartmouthrailriver.co.uk](http://www.dartmouthrailriver.co.uk) for details of times and fares. Combined river excursions are also available – the Round Robin which takes you from Paignton – Totnes by bus, down the river Dart from Totnes – Dartmouth and then back on the steam train from Kingswear to Paignton.

# Out and About

## On the water ...



### Crossing the water

There are five estuaries in the National Landscape of which four are served by ferries - an important and enjoyable way to get around.

If you're walking the South West Coast Path they form an essential link across the estuaries. As they're dependent on tides and weather it's best to check the ferry services timetable before travelling. For further details speak to an information centre (back page).

### Sense of adventure?

You'll be spoilt for choice in the National Landscape. Speak to an information centre (back page) or search the internet for one of the many activity providers offering a range of experiences.



### Canoeing

- All year round activity
- Guided canoeing exploring the waterways
- Canoe safaris
- Have fun on a canoe big enough for the whole family or smaller ones for a few of you.

### By boat

- Enrol for some lessons in Dittisham or Salcombe
- Take a guided trip to see some wildlife or local scenery
- If you fancy time on the water take a cruise down the Kingsbridge–Salcombe Estuary, or up the Dart Estuary to Totnes.

### Active water sports

Hire equipment or book up some lessons for professional coaching

- Kite surfing
- Coasteering
- Stand up paddleboarding
- Surfing
- Sea kayaking
- Sea swimming
- Snorkelling



# Ferry timetable

Ferry timetables may change, for example due to adverse weather or public holidays. Check journey with operator before travel.



	Yealm Estuary	Erme Estuary	Avon Estuary	Salcombe - Kingsbridge Estuary		
Type of Ferry	Passenger ferry / water taxi	No ferry service	Passenger ferry	Salcombe - East Portlemouth passenger ferry	Kingsbridge - Salcombe passenger ferry	Salcombe - South Sands passenger ferry
Operating Period	28th March - late September	The Erme can usually be waded across one hour either side of low tide	1st April - 30th September	All year	20th April - October	28th March - 31st October
Operating Times	Daily, usually 10am-4pm. (service may be restricted in strong winds or operate longer hours in the holidays)		Daily 10am - 12pm and 2 - 4pm	Daily 8.30am-6.30pm (summer timetable)	Varies with tides. Also run harbour, coastal and creek cruises.	Summer 9.45am - 5.30pm daily (6pm in August)
Routes	Between Noss Mayo (wide slip) Newton Ferrers (Yealm Hotel Steps) & Warren Point (coast path to Wembury)	Cross between Wonwell slipway and Mothecombe slipway	Bantham slipway to Cockleridge Ham (Bigbury-on-Sea)	Salcombe Jubilee Pier ferry steps to East Portlemouth Jetty	Kingsbridge Steamer Steps or Crabshell Quay To Salcombe Jubilee Pier or Whitestrand Pontoon	Salcombe centre (Whitestrand) to South Sands beach
Contacts	07399 067942 <a href="mailto:info@ycet.co.uk">info@ycet.co.uk</a> for advance bookings	At low tide the water should not come much higher than an adults knee	<a href="http://www.banthamestate.co.uk/getting-here/ferry">www.banthamestate.co.uk/getting-here/ferry</a> 01548 560897	01548 842061 / 07769 319375	07967 597527 <a href="http://www.kingsbridge.salcombeferry.com">www.kingsbridge.salcombeferry.com</a>	<a href="http://www.southsandsferry.co.uk">www.southsandsferry.co.uk</a>

	Dart Estuary							
Type of Ferry	Lower Dartmouth vehicle ferry	Higher Dartmouth vehicle ferry	Dartmouth Castle passenger ferry	Dartmouth - Greenway passenger ferry	Dittisham - Greenway passenger ferry	Dartmouth - Dittisham & Noss passenger ferry	Dartmouth - Totnes passenger cruises	Kingswear - Dartmouth passenger ferry
Operating Period	All year (excl. Christmas day)	All year	Easter - October	1st March - 1st November	All year (excl. Christmas day & Boxing day)	All year	April - October	All year
Operating Times	Daily 7am - 10.45pm Kingswear side (8am Sunday)	Daily 6.30am - 10.45pm Dartmouth Side (8am Sunday)	Daily from 10am-4.45pm (Embarkment) on demand	Daily see website for times	Daily 9am - 5pm (peak season)	Daily, 10am - 5pm (peak) plus on demand stop at Noss Marina	Available on the website	Daily 7.30am - 6.55pm (9am Sunday)
Routes	Kingswear to Dartmouth South Embankment	Dartmouth North Embankment to Kingswear	Dartmouth South Embankment to Dartmouth Castle	Dartmouth South Embankment to Greenway Quay	Dittisham to Greenway Quay	Dittisham to Dartmouth Double Steps	Totnes Steamer Quay to Dartmouth South Embankment	Dartmouth South Embankment to Kingswear
Contacts	<a href="http://www.southhams.gov.uk/ferry-and-harbour/dartmouth-lower-ferry">www.southhams.gov.uk/ferry-and-harbour/dartmouth-lower-ferry</a>	<a href="http://www.dkfb.co.uk">www.dkfb.co.uk</a>	<a href="http://www.dartmouthcastleferry.co.uk">www.dartmouthcastleferry.co.uk</a>	<a href="http://www.greenwayferry.co.uk">www.greenwayferry.co.uk</a> 01803 882811	<a href="http://www.dittishamferries.co.uk">www.dittishamferries.co.uk</a> 07907 528201 / 07818 001108	<a href="http://www.dartmouthrailriver.co.uk">www.dartmouthrailriver.co.uk</a> 01803 555872		

# Take a hike!



With over 35 walks free to download on our website, we thought we would pick just a few to give you some ideas of where to start! The full list of walks as well as these, can be found at [www.southdevon-nl.org.uk/walks](http://www.southdevon-nl.org.uk/walks)



## A walk for families - Slapton Ley

With wildlife a-plenty, boardwalks and woodlands to explore and a hidden geocache, it really is a great walk for all the family. And maybe an ice cream by the seaside to finish?!

*2.75 miles, easy to moderate walk.  
Not suitable for pushchairs.*



## A walk for high climbers – Kingston

A hugely rewarding coast and estuary walk with peerless views from some of the most dramatic cliffs in the area. It ends with a huge vista of South Devon, and the welcoming sight of Kingston village snuggled amongst the fields. Some of the hills are steep, but worth the views from the top!

*5.5 miles, strenuous walk*



## A walk for Spring – Dartmouth Gallants Bower

Don't miss this walk when the remains of the Civil War star fort are carpeted in bluebells – just gorgeous! With views up the Dart estuary and out to sea, it is easy to see why this was such an important lookout point in the past.

*1.8 mile, easy to moderate walk.*



## A walk for Autumn – Loddiswell and Middle Avon Valley

Who doesn't love being in the woods in Autumn as the trees don their wonderful golden coats! Stroll along the wooded river valley following the route of the old Primrose Line railway, then finish in the nearby cafe with a cup of something warm.

*3.5 mile moderate walk.*



## A walk for all – Noss Mayo and Revelstoke Drive

If you want an easy, flat walk with amazing coastal views over our wild and rugged coastline – you can park at the start point and just walk out along the carriage path created in the 1880s. This part of the walk is just over 2km to the headland near the mouth of the Yealm. For an easy route retrace your steps – the view is even better the other way round!

*Whole circular route – 4.5 miles  
easy to moderate walk.*

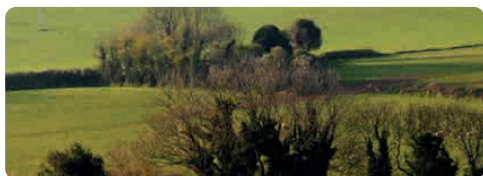
*Revelstoke Drive section – 1.2 miles  
each way easy walk*



## A walk for history lovers – Kingsbridge town trail

Discover the hidden history of Kingsbridge town centre – all the clues are there, if you know where to look! You will be surprised at how many stories the buildings of this historic market town have to tell!

*2 mile easy walk.*



# Heritage



There are lots of opportunities in the National Landscape to explore the past. You can do this on your own or with the help of others like the National Trust or English Heritage.



**The Kingsbridge Cookworthy Museum** opened in 1972. The galleries are full of permanent displays and special exhibitions. [www.kingsbridgemuseum.org.uk](http://www.kingsbridgemuseum.org.uk)

**Dartmouth Museum** is a small, fascinating museum in an atmospheric old merchant's house on the Butterwalk. [www.dartmouthmuseum.org](http://www.dartmouthmuseum.org)

**Salcombe Maritime Museum**  
A treasure trove of models, paintings, photographs and artefacts tell the story of Salcombe's links with ships and the sea from ancient times to the Second World War. [www.salcombemuseum.org.uk](http://www.salcombemuseum.org.uk)

**Start Point lighthouse** was built in 1836 to protect shipping off Start Point in south Devon. The Lighthouse, sited at the very end of the headland, has guided vessels in passage along the English Channel for over 190 years. Details of tours at [www.startpointdevon.co.uk](http://www.startpointdevon.co.uk)

**Lupton House** is a Grade II\* listed building set in beautiful parkland. The Lupton Trust was formed in 2008 to bring the House and gardens back into use for the benefit of the community. [www.discoverlupton.com](http://www.discoverlupton.com)



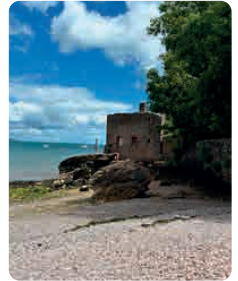
massive earth and stone rampart topped with a timber palisade, and a deep outer ditch.

The site is owned by the **Arundell Charity**, there is a small car park and paths around the monument.

**The National Trust** owns and manages much of the coastline in the National Landscape in addition to woods and gardens. All are open for walking. [www.nationaltrust.org.uk](http://www.nationaltrust.org.uk)

**English Heritage** has four exciting castles to visit in South Devon at Bayard's Cove and Dartmouth Castle in Dartmouth, Totnes Castle and Berry Pomeroy Castle near Totnes. [www.english-heritage.org.uk/visit/region/southwest](http://www.english-heritage.org.uk/visit/region/southwest)

**Heritage Open Days 2026, 11th - 20th September.** Every year places across the country open their doors for FREE in England's largest festival of history and culture. It's a chance to see hidden places and try out new experiences, celebrating heritage, community and history. [www.heritageopendays.org.uk](http://www.heritageopendays.org.uk)



Uncover more of South Devon's history and heritage whilst enjoying stunning views of the coast with our narrated walk series 'walking through time'. Scan the QR code and scroll down to listen along, or download one of our self-guided trail leaflets.



# Life on The Edge



Flying into year three of the Life on the Edge project!



We are now into the third year of our five-year project and over 7,000 people have taken part so far! There have been all kinds of amazing activities ranging from guided walks, practical conservation tasks, arts activities, seed collecting, meadow making and much more! And there is lots more planned for an exciting Year 3. You can find out more about the events, volunteer tasks and surveys, walks and fun days in the event listings in the back of this booklet.

We have been working closely with local land managers to create over 25 hectares of new species-rich grassland and restored over 115 hectares of insect friendly habitats in our project hotspots. Our project team and volunteers have been busy conducting surveys along the coast this past year and have made some awesome discoveries! In December we found a third population of Mediterranean oil beetle, previously only known from two sites in the UK. We hope in our third year we will continue to uncover more populations!

Investing in people is core to the Life on the Edge project, and producing opportunities for people to learn new skills is hugely important. We are very proud to be able to provide paid work and training for new people entering the world of conservation work. We currently have a Communications Assistant, two part-time Trainees and three Apprentices working with us. There will be more opportunities throughout the project, with another three apprenticeships, three Communications Assistants and four Trainees over the next three years. We could not do any of this without the support of our amazing volunteers, partners, staff team and funders, including the National Lottery Heritage Fund, and more locally, Devon Environment Foundation, National Trust and South West Coast Path Association –

**Thanks so much!**



Keep up to date by signing up to our newsletter, The Bees Knees – email [lote@southdevon-nl.org.uk](mailto:lote@southdevon-nl.org.uk)

# Here's a snapshot of what's going on

## Make your time count!

Join our volunteer survey programme to help search out the invertebrates along our coastline, helping us to build a better picture of their distribution. See the events listings for details. There are also monthly volunteer tasks if you fancy getting your hands dirty!

## LotE touring theatre

We are working with Doorstep Arts on a very exciting arts project due to hit South Devon in October 2026! Keep an eye on our socials, the website or sign up for our newsletter to keep up to date!

## Small Wonders!

We have worked with artists to release Small Wonders in our hotspots around the South Devon Coast – head out and see if you can find them for yourself. They can all be found on or near the South West Coast Path so why not take a wander and explore whilst you are there! See [www.southdevon-nl.org.uk/smallwonders](http://www.southdevon-nl.org.uk/smallwonders)

## Reaching Out

We have programmes running with many groups including Torbay communities, Adult carers, Devon Mind and local schools. We are hugely grateful to our partners, without whom the project would not be possible!



If you are involved with a group who might like to work with us – get in touch!

We are also running our monthly expert-led walks series, talks to local community groups, bringing our roadshows to large public events, fairs and festivals, and putting on our own large events.

## Supporting action

We have two grant schemes which can help communities and landowners carry out LotE projects. Our Conservation Grants are up to £5,000 and are for carrying out projects on the ground which benefit our target species. Our Community Grants are up to £2,000 and are for activities and projects which engage people in project activities. If you would like to find out more about the grants, see our website for more details or drop us an email to sound out your idea!



For more information visit [www.southdevon-nl.org.uk/life-on-the-edge](http://www.southdevon-nl.org.uk/life-on-the-edge) or get in touch [lote@southdevon-nl.org.uk](mailto:lote@southdevon-nl.org.uk)

# Farming matters ...



## Farming in Protected Landscapes

During the 5th year of the programme the local assessment panel has approved a further 29 projects with grant funding in excess of £312K delivered by the end of March 2026.



Through the programme, farmers and land managers can be supported to carry out projects that support nature recovery, mitigate the impacts of climate change, provide opportunities for people to discover, enjoy and understand the landscape and cultural heritage, or support nature-friendly, sustainable farm businesses. It's a programme of funding for one-off projects covering these areas of work, rather than an agri-environment scheme.

The selection of projects this year has included:

- **Micro dairy and vending machine -**

This project will develop enterprises at Mount Folly Farm, Bigbury with more public engagement, biodiversity and on farm enterprise development. Drop in for your daily pint and a range of other goodies.



- **Food in the Community** - This collaborative project, based at Daynes Farm, Harberton will create opportunities for a diverse group of residents to immerse in the natural landscape, participate in land based activities, including climate and nature friendly growing practices, and improve their understanding and appreciation of fresh farm produce.
- **Millco farming** - an orchard recreation project at Orcheton Farm Modbury on 8.7 ha spread across 7 fields and the purchase of a tow and fert machine for liquid foliar feeding of grassland and arable crops reducing the use of nitrogen.
- **Future of FiPL** - We were thrilled to hear in January that FiPL would be extended until March 2029. The FiPL team look forward to receiving enquiries for new projects.

## Farm Cluster

We've held a range of workshops and visits during the year and welcomed several new members.

The programme has included:

- A Barn Owl Box making session
- Farming Champions visits both within and beyond the area to see best practice
- 10 members visited the regenerative farming festival Groundswell which was an amazing opportunity to network, see demos and listed to some inspirational speakers

**Fingers crossed** - we are waiting to hear if we will have a 6 month extension of the programme.



# Estuaries Did you know?



- Estuaries are nature's water catchment treatment works - gazillions of naturally occurring bacteria and other organisms in the estuarine mud, break down the organic material such as leaves, twigs and animal detritus brought down by the catchment's streams and rivers.



*Estuary mud*

- Many of the nutrients released are used by single celled mobile seaweeds, diatoms, in the process of solar powered photosynthesis to make their own food.
- Between them, the bacteria and diatoms feed most of each estuary's food webs and some of those of the surrounding countryside and coast.
- There are as many bacteria in just 4 teaspoons of mud as there are people on the planet. When I first started my work on estuaries, it was 3 teaspoons!!
- There are so many bacteria in the surface of the mud that they have used up all the oxygen in the top 1cm. The anoxic world of mud below that turns everything black

and the bacteria living there respire on chemicals quite alien to the animals and plants of the world above.

- All of South Devon's estuaries are 'rias' or drowned river valleys - river valleys once carved out by Ice Age rivers, flooded by the rising sea levels as the ice caps melted. During the height of the last Ice Age (sorry, no photographs), the sea level was 120m below that of today. Salcombe-Kingsbridge Estuary is an example of a detritic (fingered) ria.



*Managing the invasive non native pacific oysters - Salcombe-Kingsbridge estuary*

# At a glance

## Access

# £101k

spent to improve access for all in the National Landscape including:

## 11 accessible picnic benches for towns and parishes

At Bolberry/Bolt Tail the creation of a

# 2.6km

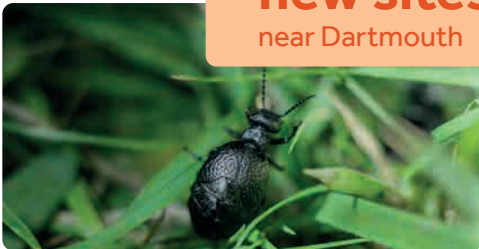
long multi-user route, gates with trombone handles, signposting and waymarkers



## Mediterranean oil beetle

Life on The Edge volunteers discovered the elusive beetle at

## two new sites near Dartmouth



## Facilitation Group

# 35 farmers

working together to bring landscape scale benefits



## 30 x 30

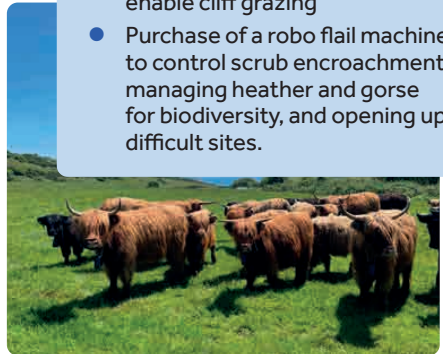
# £192k

the UK has committed to protect

30% of land & sea for nature by 2030 spent towards protecting 30% of our land and sea by 2030

### We have supported:

- Restoration of 28ha of species rich grassland.
- Introduction of agroforestry to improve water management
- Purchase of no fence collars to enable cliff grazing
- Purchase of a robo flail machine to control scrub encroachment, managing heather and gorse for biodiversity, and opening up difficult sites.



# Taste the landscape



## South Devon National Landscape is a paradise for food lovers.

Enjoy everything from seafood to dairy, charcuterie and seasonal produce to meat, fish and game, preserves and local tipples. You'll find it all here - fresh, local and delicious.

**Farm shop/ cafés** – we have an array of farm shops and cafés where you can sample and buy a fantastic selection of local food and drink including Daynes Farm Shop, Aune Valley Café, Heron Valley, Stokeley Farm Shop, the Ring Feeder and Springfield Farm shop. There are also vending machines at Coleridge Farm, Mount Folly Farm and Stanborough Farm supported by FiPL funding.

[www.visitsouthdevon.co.uk/food-and-drink](http://www.visitsouthdevon.co.uk/food-and-drink)



## Dartmouth Food Festival

23 - 25 October 2026

The festival has grown from humble beginnings in 2004 into a first class feast of entertainment featuring workshops, seminars, tastings, competitions, demonstrations and over 100 hand-picked exhibitors.

[www.dartmouthfoodfestival.com](http://www.dartmouthfoodfestival.com)

## Farmers' Markets

Shopping at the farmers market means

- Buying fresh, seasonal produce that's only travelled a short distance
- Meeting the people who've grown, raised or made the products
- Finding specialist and unusual produce and crafts
- Enjoying the markets friendly atmosphere
- Benefiting the local economy and being part of the community.

**Kingsbridge** – Kingsbridge Farmers and Local Producers Market is on 1st, 3rd and 5th Saturdays each month on the Quay from 9am - 1pm.

[www.kingsbridgefarmersmarket.co.uk](http://www.kingsbridgefarmersmarket.co.uk)

**Wembury** – 9.30am - 12pm, Wembury Village Hall. 1st Saturday of the month. Range of food, drink and local crafts. See Wembury Farmers Facebook page.

**Dartington** – Held on the 1st Saturday every month from 11am-4pm in the Cider Press Centre. Hosted by CLASH/Crop.

[www.dartington.org/visit/shops](http://www.dartington.org/visit/shops)

In addition there are good markets in Dartmouth on Fridays, and Totnes on Fridays & Saturdays, with a selection of local produce from the National Landscape on sale. There is also a Sunday Food and Craft Market in Totnes every 3rd Sunday of the month.

## Tips for shopping & eating out

- When shopping try to make a point of sourcing local produce to really experience what wonderful food this area has to offer.
- If you eat out locally enquire where the ingredients are sourced from - it helps highlight to businesses that consumers care about traceability and quality local food. Encourage them to seek out more local suppliers.
- Whenever you purchase food and drink from the National Landscape you are helping to sustain the local economy and landscape.



There is so much going on in the South Devon National Landscape that we can't possibly fit it all in here! There are lots more events and full details of all the ones printed in this programme on our website. Check it out and get exploring!

[www.southdevon-nl.org.uk](http://www.southdevon-nl.org.uk)

Contains Ordnance Survey data  
 © Crown copyright and database right 2026. Ordnance Survey.  
 0100057066



**Beaches**

- Main beaches
- Event start points
- Downloadable trail start/finish points
- Information Centres
- Ferries
- Low tide crossing point
- South Devon National Landscape

The OS map, Explorer OL20 covers the whole of the National Landscape area and has details of all rights of way.



South Devon  
National  
Landscape

# Events



## Your guide to events in the National Landscape for 2026

This programme features walks, talks and events organised by the National Landscape and other organisations that help us to enjoy, look after and manage the area.



We hope that you'll find lots of ideas for days out and ways to enjoy our stunning National Landscape, as well as events which will help you understand more about looking after, and living, in a protected landscape.



### When attending these events, please remember:

- Wear sensible footwear and clothing.
- Some events are held on uneven or slippery ground, or rocky beaches; please take extra care.
- If not stated, please check with the organiser if dogs are allowed on the event.
- Refreshments suggested in this programme are optional and only included in the price of events if stated.
- Where this programme lists activities run by another organisation or company, the responsibility for that event lies with them.

## Life on the Edge... We're a-buzz!

There are lots of great events coming up this year - look out for the LotE bee in the programme. We will be out and about over the Summer with the **LotE roadshow** – find us at Torbay Pride in June, Wembury Fayre and Galmpton Gooseberry Fair in July and Holbeton Apple Day in October.

Our **Small Wonders**, a series of artworks created by local artists and community, will be out around the coast from April to October - see if you can find them! You can find out more about them and where they are at [www.southdevon-nl.org.uk/smallwonders](http://www.southdevon-nl.org.uk/smallwonders). There will also be lots of chances to help do your bit for our endangered species. Why not get stuck in with our monthly conservation **volunteer** tasks or join us for one of the surveys and get a chance of seeing some of the stars of the show up close!

Get all of this information and more on our website [www.southdevon-nl.org.uk/life-on-the-edge](http://www.southdevon-nl.org.uk/life-on-the-edge) or contact [lote@southdevon-nl.org.uk](mailto:lote@southdevon-nl.org.uk) and ask to be subscribed to our **Bees Knees** news newsletter.



## Small Wonders

April – October 2026

South Devon National Landscape

Take a closer look at some of the small things that make South Devon's coastline special! We have worked with artists to release Small Wonders in our hotspots around the South Devon Coast – head out and see if you can find them for yourself. They can all be found on or near the South West Coast Path so why not take a wander and explore whilst you are there! You can find out more about our Small Wonders programme at: [www.southdevon-nl.org.uk/smallwonders](http://www.southdevon-nl.org.uk/smallwonders)



## The Insects Tea Party

Installation by Sara Hurley and Monica Shanta working with community groups

Paignton Library and Information Centre,  
what3words  
///pills.hedge.towns



## The Dragonfly Trail – Laser and Grain

Lower Mill Meadow,  
Wembury PL9 0AU  
what3words

///delight.backers.fruitcake



## A Way with Words

Haiku gate created by LotE participants

South West Coast Path,  
Scobbiscombe what3words  
///dabbing.replied.utensil



## Biofluorescence photography exhibition

David Atthowe & Kingsbridge College students

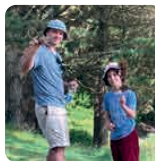
East Soar Farm, Walkers Hut  
what3words  
///tadpoles.wedding.laughs



## Little Acorns at Coleton Fishacre

Every Wednesday in term  
time 9.30am – 11.30am  
National Trust

Discover the magic of the season with your little ones at Coleton Fishacre. Come dressed for messy outdoor play – whatever the weather. Little Acorn sessions are suitable for children under 5 years old. Welly walks, activities and admission are all free. No dogs please, free Meet at the cafe, Coleton Fishacre, Kingswear, TQ5 0ES



## Guided walks on the coast near Coleton Fishacre

Friday 3rd April 10.30am – 12.30pm National Trust

Put your best foot forward and join the National Trust Walking Volunteers for a free guided walk near Coleton Fishacre. Join the team on the first Friday of each month near Coleton Fishacre, with walks ranging from accessible and beginner friendly to longer heart pumping hikes. Well behaved dogs on short leads welcome. Free (car park charges may apply).

[www.nationaltrust.org.uk/coleton-fishacre](http://www.nationaltrust.org.uk/coleton-fishacre)

Meeting points, duration and difficulty ratings vary for each month so please check the website in advance.

## Rockpooling at North Sands

Thursday 2nd April 11.45am – 1.45 pm  
South Devon National Landscape

Join Nigel, our estuaries officer to explore the rocky shores of North Sands over one of the lowest predicted tides of the year, and discover the rich intertidal marine life found in the remaining pools and crevices! NO dogs please, **book** your free place at [www.southdevon-nl.org.uk](http://www.southdevon-nl.org.uk)

Meet at North Sands car park, Salcombe, TQ8 8LD



## Seaquest Sunday

Sunday 5th April

8.30am – 10.30am

Devon Wildlife Trust  
and Paul Burley

Join us on the first Sunday of each month, to learn about Devon's marine megafauna and how to develop the skills required to effectively 'sea watch'! We will collect data as part of Seaquest Southwest, a citizen science project run by Devon and Cornwall Wildlife Trusts. See website for more details and to **book** - [www.wemburymarinecentre.org](http://www.wemburymarinecentre.org).

[www.wemburymarinecentre.org](http://www.wemburymarinecentre.org).

Well behaved dogs on short leads welcome, free.

Meet at Wembury Point car park, Wembury PL9 0BA

## Cyanotype workshop

Sat 11th April 10.30am – 1pm  
(other dates available online)

Devon Wildlife Trust

Using the intricate shapes of seaweed and a little bit of chemistry, make beautiful pieces of artwork that you can take home with you. We'll also be learning about the different types of seaweed you can find washed up on the strandline as well as the history of cyanotypes. See website for more details and to **book** - [www.wemburymarinecentre.org](http://www.wemburymarinecentre.org). £12.50 per person.

Meet at Wembury Marine Centre, Wembury. PL9 0HP

## LotE volunteer conservation task - Bee bank building



Saturday 11th April 10.30 – 3pm  
South Devon National Landscape

Help us to create new habitat for our rare solitary mining bees.

**Book** your free place and a pick up if you need it – email

[lotel@southdevon-nl.org.uk](mailto:lotel@southdevon-nl.org.uk)

Pick ups Follaton House 9.30am,  
Kingsbridge Quay 10am. Meet at  
Prawle Point car park (National  
Trust), Chivelstone TQ7 2BX



## Tots and toddlers rockpool safari

Wed 15th April 10am – 11am  
(other dates available online)

Devon Wildlife Trust

Join the DWT staff and volunteers for a mini rockpool session aimed at preschool children. All children must be accompanied by an adult. See website for more details and to **book** - [www.wemburymarinecentre.org](http://www.wemburymarinecentre.org).

£5 per child.

Meet at Wembury Marine Centre, Wembury.  
PL9 0HP



## Sharpham Trust dusk chorus – a birdsong walk

Friday 24th April  
6.45pm – 9.15pm

Sharpham Trust

Explore the beautiful Sharpham Estate - and the sounds of the birdlife there - with expert Mike Langman. He'll guide and inspire birdsong fans, from raw beginners to seasoned listeners, with his observations, facts and knowledge about our feathered friends, their habits and habitats. **Booking essential**, [www.sharphamtrust.org](http://www.sharphamtrust.org). Adult prices vary £2-£12, child free.

Meet at Sharpham House, Ashprington.  
TQ9 7UT.

## LotE @ The Box - Meadow Makers

Tues 14th – 16th April 10.30am -12.30pm and 1.30pm – 3.30pm  
South Devon National Landscape

Come and find us at The Box as we bring the coastal meadows into Plymouth! Help us create handcrafted flowers to decorate the classroom and over the week it will bloom into a beautiful meadow. Free

The Box, Tavistock Place, Plymouth PL4 8AX



## The big bug count!



**Sunday 26th April  
2pm – 4pm**

**South Devon National  
Landscape**

Learn how to carry out a really simple flying insect timed count – a FIT count! We will show you how to use the app and log your results, adding to a national survey of insects over the summer – just in time for No Mow May! Free (car park charges apply)

*Meet at Berry Head car park, Brixham TQ9 5AP*

## Online talk – The importance of wildflower rich meadows

**Tues 28th April  
6.30pm- 7.30pm**

**South Devon National  
Landscape and More Meadows**

*Discover why species rich grasslands are so important for our rare and endangered invertebrates in South Devon, but also as a wildlife rich habitat in general. This talk will be held on Zoom, to book your free place and get a zoom link, see [www.southdevon-nl.org.uk/events](http://www.southdevon-nl.org.uk/events) Meet on Zoom*

## Coastal explorers - Birds at Berry Head Tues 28th April 8am – 10am



**South Devon National Landscape**

Our monthly wellbeing walk with the team! Join Rob for an early start to discover the birds at Berry Head, hiding in the hedgerows, feeding in the meadows, or nesting on the cliffs. They will be in full song, defending territories and trying to attract a mate! A fairly easy walk of 2 miles with plenty of time for stopping, spotting and listening. Bring your binoculars if you have them, well behaved dogs on short leads welcome

**Book** your free place at [www.southdevon-nl.org.uk/events](http://www.southdevon-nl.org.uk/events).  
Pick ups Follaton House 7.05am, Paignton Asda 7.30am  
*Meet at Berry Head car park, Brixham TQ9 5AP*



## Women's conservation group Berry Head meadow management

**Thursday 30th April 1.30pm – 4.30pm**

**South Devon National Landscape**

Our women's conservation group meet once a month around the Brixham area. It is a friendly group and open to any women (non-binary and trans folk welcome) from beginners to seasoned volunteers! We provide the equipment, guidance and ever important brews and biscuits. **Book** your free place (Car park charges apply) by emailing [lote@southdevon-nl.org.uk](mailto:lote@southdevon-nl.org.uk)

Pick up - no. 12 bus terminus, central Brixham at 1.10pm.  
*Meet at Berry Head car park, Brixham TQ9 5AP*



## LoTE volunteer species surveys - Oil beetles and beeflies

**Friday 1st May 10.30am – 3.30pm South Devon National Landscape**



Join our team on the hunt for our target species on the first Friday of the month. No previous experience needed – just a keen pair of eyes and patience! All equipment and guidance provided, records will be logged to the national database. **Book** your free place – email [lote@southdevon-nl.org.uk](mailto:lote@southdevon-nl.org.uk)

Pick ups – Follaton House, Totnes 9.30am, Coastal Trail café, Dartmouth 10am  
*Meet at Little Dartmouth car park (National Trust), Dartmouth TQ6 0JR*



## Seaquest Sunday

Sunday 3rd May 8.30am –  
10.30am Devon Wildlife Trust  
and Paul Burley

Join us on the first Sunday of each month, to learn about Devon's marine megafauna and how to develop the skills required to effectively 'sea watch'! We will collect data as part of Seaquest Southwest, a citizen science project run by Devon and Cornwall Wildlife Trusts. See website for more details and to **book** - [www.wemburymarinecentre.org](http://www.wemburymarinecentre.org). Well behaved dogs on short leads welcome, free.

Meet at Wembury Point car park, Wembury PL9 0BA

## Rockpool safari

Sunday 3rd May  
12.30pm – 2pm  
(other dates available online)  
Devon Wildlife Trust

Join the DWT staff and volunteers to explore the rockpools of Wembury beach. All children must be accompanied by an adult. See website for more details and to **book** - [www.wemburymarinecentre.org](http://www.wemburymarinecentre.org). £5.50 per child

Meet at Wembury Marine Centre, Wembury. PL9 0HP

## LotE volunteer conservation task Bee posts

Sunday 10th May  
10.30 – 3pm  
South Devon National Landscape

Help us to install our new carved posts complete with bee habitat for our rare solitary mining bees.

**Book** your free place and a pick up if you need it – email [lote@southdevon-nl.org.uk](mailto:lote@southdevon-nl.org.uk)

Pick ups at Follaton House, Totnes 9.30am and Avon Inn car park 9.45am. Meet at Wembury beach car park, Wembury PL9 0AU.



## Coastal explorers – Farming for nature at Coleton

Tues 19th May 10.30am – 1pm  
South Devon National Landscape

Our monthly wellbeing walk with the team! Join Sam to find out more about how we are working with local farmers to make nature friendly changes on their land. This 3 mile walk will be on the coast path and includes a couple of fairly steep inclines. Well behaved dogs on short leads welcome. **Book** your free place at [www.southdevon-nl.org.uk/events](http://www.southdevon-nl.org.uk/events)

Pick ups at Follaton House 9.35am and Paignton Asda 10am

Meet at Coleton Camp car park, Kingswear TQ6 0EQ



## Family bug hunt

Saturday  
16th May  
Drop in  
anytime 10am – 12pm  
South Devon National Landscape

Explore the meadows at Bolberry and see who is crawling and buzzing around the flowers, then have a go at a bug craft to take home with you! Drop in anytime and stay as long as you like!

Meet at the LotE gazebo on the meadow, Bolberry Down TQ7 3DY.



## Accessible Rockpooling at North Sands

Sunday 17th May  
12 noon – 1.30pm  
South Devon National Landscape

Explore the rich intertidal marine life found over the rocky shores of North Sands over a good low predicted tide but without leaving the security of the sandy beach (unless you want to). Your guide will bring appropriate trays to collect more robust foreshore life for you to see close-up, explore its story with you before returning it safely to its home rockpool. NO dogs please, for more access information and to **book** your free place, see [www.southdevon-nl.org.uk](http://www.southdevon-nl.org.uk)  
Meet at North Sands car park, Salcombe, TQ8 8LD.

## Community beach clean

Monday 25th May

10am – 11am

National Trust

Join us the on the last Monday of each month to help keep Wembury safe, clean and tidy with a hot drink after to say thank you! **Booking essential**, see [www.nationaltrust.org.uk/visit/devon/wembury/events](http://www.nationaltrust.org.uk/visit/devon/wembury/events) Free but donations welcome. No dogs please, free.

Meet at Wembury Marine Centre. PL9 OHP



## Barn Owl talk at Coleton Fishacre

Wed 27th May

1.30pm – 3.30pm

National Trust and Barn Owl Trust

Join The Barn Owl Trust in the loggia for a pop-up talk on all things Barn Owls. This small national charity works hard to care and conserve Barn Owls. Learn about Barn Owl habitats and conservation, how the extreme weather and climate change can affect them and getting a look into the feeding habits with pellet analysis. Free, National Trust admissions apply.

Meet at Coleton Fishacre, Kingswear, TQ5 0ES

## Guided walks on the coast near Coleton Fishacre

Friday 29th May

10.30am – 12.30pm

National Trust

Put your best foot forward and join the National Trust Walking Volunteers for a free guided walk near Coleton Fishacre. With clifftop views, special monuments and a chance to see local wildlife, there's a walk to suit everyone. Well behaved dogs on short leads welcome. Free (car park charges may apply).

Meeting points, duration and difficulty ratings vary for each month so please check the website in advance.

[www.nationaltrust.org.uk/coleton-fishacre](http://www.nationaltrust.org.uk/coleton-fishacre)

## Women's conservation group, Man Sands Bee surveying

Thursday 28th May 1.30pm – 4.30pm

South Devon National Landscape

Our women's conservation group meet once a month around the Brixham area. It is a friendly group and open to any women (non-binary and trans folk welcome) from beginners to seasoned volunteers! We provide the equipment, guidance and ever important brews and biscuits. **Book** your free place (Car park charges may apply) by emailing [lote@southdevon-nl.org.uk](mailto:lote@southdevon-nl.org.uk)

Pick up - no. 12 bus terminus, central Brixham at 1.10pm.

Meet at Man Sands car park, Kingswear TQ6 0EF



## Snorkel safari

Saturday 30th May

10am – 12.30pm

(other dates available online)

Devon Wildlife Trust

Join our fully trained BSAC instructors for a snorkel safari around Wembury Bay. Suitable for beginners or more advanced snorkellers. Full kit provided. Children must be 8+ to take part.

**Booking essential**, see [www.wemburymarinecentre.org/events](http://www.wemburymarinecentre.org/events). £30 per person.

Meet at Wembury Marine Centre, Wembury. PL9 OHP

## Seaqwest Sunday

Sunday 3rd June

8.30am – 10.30am

Devon Wildlife Trust and Paul Burley

Join us on the first Sunday of each month, to learn about Devon's marine megafauna and how to develop the skills required to effectively 'sea watch'! We will collect data as part of Seaquest Southwest, a citizen science project run by



Devon and Cornwall Wildlife Trusts. See website for more details and to **book** - [www.wemburymarinecentre.org](http://www.wemburymarinecentre.org). Well behaved dogs on short leads welcome, free.

Meet at Wembury Point car park, Wembury PL9 0BA

## LotE volunteer species surveys

### Long-horned bees



**Friday 5th June**  
**10.30am – 3.30pm**  
**South Devon National Landscape**

Join our team on the hunt for our target species on the first Friday of each month. No previous experience needed – just a keen pair of eyes and patience! All equipment and guidance provided, records will be logged to the national database. **Book** your free place – email [lote@southdevon-nl.org.uk](mailto:lote@southdevon-nl.org.uk)

Pick ups at Follaton House, Totnes 9.30am and Kingsbridge Quay 10am  
*Meet at Prawle Point car park, (National Trust), Chivelstone, TQ7 2BX*



## Shoresearch survey

**Thu 18th June 2pm – 4pm**  
**(other dates available online)**  
**Devon Wildlife Trust**

Join our Shoresearch team and help monitor our fragile sea life and better understand the effects of pollution, climate change and invasive alien species. All training provided, more details and **Booking essential**, see [www.wemburymarinecentre.org/events](http://www.wemburymarinecentre.org/events). Free, no dogs please.

*Meet at Wembury Marine Centre, Wembury. PL9 0HP*

## Equine grazing management – walk and talk



**Wednesday 10th June 6pm – 9pm**  
**South Devon National Landscape**

Explore the power of sustainable horse grazing at Ash Rescue Centre on this short walk. Hear from fellow equestrians, vets, and land specialists on cutting back wormers, horse health and welfare, improving grazing management and how horse grazing can help create thriving habitats for wildlife. NO dogs please, suitable for adults. **Book** your free place at [www.southdevon-nl.org.uk/events](http://www.southdevon-nl.org.uk/events)

*Meet at Ash Rescue Centre, Dartmouth TQ6 0LR*



## LotE @Torbay Pride

**Saturday 13th June**  
**12pm - 5pm**  
**South Devon National Landscape**



Come and find us at this amazing event where we will be celebrating all things wild and tiny! Other activities going on later and march at 1pm.

*Meet at Torre Abbey Meadows, Torquay, TQ2 5JE*

## Community beach clean

**Monday 22nd June**  
**10am – 11am**  
**National Trust**

Join us the on the last Monday of each month to help keep Wembury safe, clean and tidy with a hot drink after to say thank you! **Booking essential**, see [www.nationaltrust.org.uk/visit/devon/wembury/events](http://www.nationaltrust.org.uk/visit/devon/wembury/events) Free but donations welcome.

No dogs please, free.  
*Meet at Wembury Marine Centre. PL9 0HP*

## The English Riviera walking festival

**Saturday 6th – Sun 21st June**  
**English Riviera BID and Torbay Council**

This walking festival offers over 20 coastal and woodland walks with experienced local guides, who will take you on fascinating journeys. The walk themes include yoga, photography, painting, sketching, literature, history, wine and cheese tasting, whilst catering for all levels of fitness. Choose from a short coastal sensory stroll, to a full day tour along the South West Coast Path.

*More details at [www.rivierawalking.co.uk](http://www.rivierawalking.co.uk)*



# National Insect Week 22nd - 28th June

## Bug box making

Monday 22nd June  
10.30am - 1pm



South Devon National  
Landscape and National Trust

Kick off insect week by making a little bug box to take home and put in your garden. **Book** at [www.southdevon-nl.org.uk/events](http://www.southdevon-nl.org.uk/events) Adults only.

Meet at Coleton Fishacre, Kingswear TQ6 0EQ

## Women's conservation group

### LotE insect garden creation

Thursday 25th June 1.30pm – 4.30pm  
South Devon National Landscape



Our women's conservation group meet once a month around the Brixham area. It is a friendly group and open to any women (non-binary and trans folk welcome) from beginners to seasoned volunteers! We provide the equipment, guidance and ever important brews and biscuits. **Book** your free place (Car park charges may apply) by emailing: [lote@southdevon-nl.org.uk](mailto:lote@southdevon-nl.org.uk)

Pick up - no. 12 bus terminus, central Brixham at 1.10pm.  
Meet at Coleton Fishacre reception, TQ6 0EQ

## Guided walks on the coast near Coleton Fishacre

Friday 26th June  
10.30am – 12.30pm  
National Trust

Put your best foot forward and join the National Trust Walking Volunteers for a free guided walk near Coleton Fishacre. With clifftop views, special monuments and a chance to see local wildlife, there's a walk to suit everyone. Well behaved dogs on short leads welcome. Free (car park charges may apply).

*Meeting points, duration and difficulty ratings vary for each month so please check the website in advance.*

[www.nationaltrust.org.uk/coleton-fishacre](http://www.nationaltrust.org.uk/coleton-fishacre)

## Midsummer glow worm hunt

Friday 26th June  
9pm – 11pm  
South Devon National Landscape



Discover more about these magical creatures lighting up the night in their search for love! This 3 mile walk will be on uneven coast path in the dark so is only suitable for confident walkers. Places limited, **book** your free place at [www.southdevon-nl.org.uk/events](http://www.southdevon-nl.org.uk/events)

Meet at Start Point car park, Stokenham, TQ7 2ET

## Little Acorns LotE takeover!

Wednesday 24th  
June 10am - 12pm



South Devon National  
Landscape and National Trust

Join us for a minibeast and bug themed morning of games and makes. Suitable for preschool children and their carers.

Meet at Coleton Fishacre, Kingswear TQ6 0EQ



## Coastal explorers – Bugs and flowers at Brownstone

Tues 30th June 10.30am – 1pm

South Devon National Landscape

Our monthly wellbeing walk with the team! Join Sam to find out more about how we are working with local farmers to make nature friendly changes on their land. This 2.5 mile walk will be on the coast path and includes a couple of fairly steep inclines. Well behaved dogs on short leads welcome. **Book** your free place at [www.southdevon-nl.org.uk/events](http://www.southdevon-nl.org.uk/events)

Pick ups at Follaton House 9.35am and Paignton Asda 10am

Meet at Brownstone car park, Kingswear TQ6 0EQ



## Farm walk – East Soar Farm

Wed 1st July  
6pm – 8pm

National Trust

Join a National Trust ranger for a guided tour of this important and stunning coastal farm. Learn how the Trust and the tenants have been working hard to improve the value of the farm for wildlife and how they are working as a partner in South Devon National Landscape's Life on the Edge project. Uneven footpaths, around 2-3 miles. **Booking essential**, see [www.nationaltrust.org.uk/visit/devon/east-soar/events](http://www.nationaltrust.org.uk/visit/devon/east-soar/events) Free but donations welcome.

Meet at East Soar car park, Malborough, Kingsbridge TQ7 3DR



## Snorkel safari

Saturday 4th July  
1pm - 3.30pm

(other dates available online)

Devon Wildlife Trust

Join our fully trained BSAC instructors for a snorkel safari around Wembury Bay. Suitable for beginners or more advanced snorkellers. Full kit provided. Children must be 8+ to take part.

**Booking essential**, see [www.wemburymarinecentre.org/events](http://www.wemburymarinecentre.org/events). £30 per person.

Meet at Wembury Marine Centre, Wembury. PL9 0HP

## LotE@ Wembury Fayre

Saturday 4th July  
South Devon National Landscape

Come and find us at Wembury summer fair where we will have meadow inspired games, crafts and maybe some bug hunts!

Meet at Wembury school, Wembury, PL9 0EB



## LotE volunteer species surveys Silver-studded blue butterflies

Friday 3rd July  
10.30am – 3.30pm

South Devon National Landscape

Join our team on the hunt for our target species on the first Friday of each month. No previous experience needed – just a keen pair of eyes and patience! All equipment and guidance provided, records will be logged to the national database.

**Book** your free place – email [lote@southdevon-nl.org.uk](mailto:lote@southdevon-nl.org.uk)

Pick ups at Follaton House, Totnes 9.30am and Kingsbridge Quay 10am

Meet at East Soar car park, (National Trust), Malborough, TQ8 8PL



## LotE @ Galmpton Gooseberry Fair!

Sun 5th July  
South Devon National Landscape

Come and find us at Galmpton's Goosberry Fair on National Meadows Day, where we will have meadow inspired games, crafts and displays.

Meet at Warborough Common, Galmpton, TQ5 0PG



## Seaquest Sunday

Sunday 5th July

8.30am – 10.30am

Devon Wildlife Trust and Paul Burley

Join us on the first Sunday of each month, to learn about Devon's marine megafauna and how to develop the skills required to effectively 'sea watch'! We will collect data as part of Seaquest Southwest, a citizen science project run by Devon and Cornwall Wildlife Trusts. See website for more details and to **book** - [www.wemburymarinecentre.org](http://www.wemburymarinecentre.org).

Well behaved dogs on short leads welcome, free.

Meet at Wembury Point car park, Wembury PL9 0BA

## Farm walk

Monday 6th July

6pm - 7.30pm

National Trust

Join the National Trust ranger for a 5km guided tour of this important and stunning coastal farm. This is an opportunity to learn more about the work that the Trust and the tenants are carrying out to improve this farm for wildlife. **Booking essential**, email [southdevon@nationaltrust.org.uk](mailto:southdevon@nationaltrust.org.uk). Suitable for over 14 year olds, accompanied by an adult. No dogs please, free.

Meet at National Trust car park, Ayrmer Cove, Ringmore, TQ7 4HW

## Family bug hunt



Sunday 12th July

2pm - 4pm

South Devon National Landscape

Explore some of the fields at Coleton Barton Farm and see how they we are working with them to improve the land for wildlife. There will also be some time for a bug hunt along the way! Short walk over farm fields, not suitable for buggies. **Book** your free place at [www.southdevon-nl.org.uk](http://www.southdevon-nl.org.uk)

Meet at Coleton Barton Farm, Kingswear

## LotE volunteer conservation task

### Seed harvesting and meadows

Saturday 11th July 10.30 – 3pm

South Devon National Landscape

Explore the wonderful meadows at Ash Rescue Centre and help harvest some seed for use across the project. **Book** your free place and a pick up if you need it – email [lot@southdevon-nl.org.uk](mailto:lot@southdevon-nl.org.uk)

Pick up – Follaton House, Totnes 9.50am,

Meet at Ash Rescue Centre, Dartmouth, TQ6 0LR



## Farm walk

Mon 13th July 6pm - 7.30pm

National Trust

Join the National Trust ranger for a 6km guided tour of this stunning coastal farm. This is an chance to learn more about how the Trust and the tenants are carrying out improvements for this farm for wildlife.

**Booking essential**, email [southdevon@nationaltrust.org.uk](mailto:southdevon@nationaltrust.org.uk). Suitable for over 14 year olds, accompanied by an adult. No dogs please, free.

Meet at Scobbiscombe Farm, Kingston, Kingsbridge, TQ7 4EU

## Man Sands summer bird and natural history walk

Wednesday 15th July

9am – 12.30pm

Mike Langman, wildlife guide

A guided natural history walk down to the beach and marsh searching for a fantastic variety of birds, insects and other wildlife including the local speciality Wall Lizards. We might even see dolphins off shore. **Booking essential** [www.mikelangman.co.uk/walks](http://www.mikelangman.co.uk/walks) Adults £15, child £8.

Meet at Man Sands car park, Kingswear TQ6 0EF



## Cyanotype workshop

Thursday 16th July

10.30am – 1pm

(other dates available online)

Devon Wildlife Trust

Use the intricate shapes of seaweed and a little bit of chemistry to make beautiful pieces of artwork that you can take home with you. We'll also be learning about the different types of seaweed you can find washed up on the strandline as well as the history of cyanotypes. See website for more details and to **book** - [www.wemburymarinecentre.org](http://www.wemburymarinecentre.org). £12.50 per person  
Meet at Wembury Marine Centre, Wembury. PL9 0HP

## Rockpool safari

Wednesday 19th July

2.30pm – 4pm

(other dates available online)

Devon Wildlife Trust

Join the DWT staff and volunteers to explore the rockpools of Wembury beach. All children must be accompanied by an adult. See website for more details and to **book** - [www.wemburymarinecentre.org](http://www.wemburymarinecentre.org).

£5.50 per child

Meet at Wembury Marine Centre, Wembury. PL9 0HP

## National Marine weeks

Saturday 25th July –

Friday 7th August

There are lots of events happening from Wembury Marine Centre to celebrate our coast this fortnight! See [www.wemburymarinecentre.org](http://www.wemburymarinecentre.org) for more details!



## Women's conservation group task, Big butterfly count

Thursday 30th July

1.30pm – 4.30pm

South Devon National Landscape

Our women's conservation group meet once a month around the Brixham area. It is a friendly group and open to any women (non-binary and trans folk welcome) from beginners to seasoned volunteers! We provide the equipment, guidance and ever important brews and biscuits. **Book** your free place (Car park charges may apply) by emailing [lote@southdevon-nl.org.uk](mailto:lote@southdevon-nl.org.uk). Pick up - no. 12 bus terminus, central Brixham at 1.10pm. Meet at Berry Head car park, Brixham, TQ5 5AP.



## Coastal explorers – The Dart estuary

Tues 28th July 10am – 2pm

South Devon National Landscape

Our monthly wellbeing walk with the team! Join Nigel to find out more about the amazing habitats above and below the water of the Dart estuary This 5 mile walk will be on the footpaths and includes a couple ups and downs! Bring a snack, well behaved dogs on short leads welcome. **Book** your free place at [www.southdevon-nl.org.uk/events](http://www.southdevon-nl.org.uk/events)

Pick ups Follaton House 9.10am, Paignton Asda 9.35am

Meet at The Banjo, opposite Kingswear village stores TQ6 0AD



## Guided walks on the coast near Coleton Fishacre

Friday 31st July

10.30am – 12.30pm

National Trust

Put your best foot forward and join the National Trust Walking Volunteers for a free guided walk near Coleton Fishacre. With cliff-top views, special monuments and a chance to see local wildlife, there's a walk to suit everyone. Well behaved dogs on short leads welcome. Free (car park charges may apply).

Meeting points, duration and difficulty ratings vary for each month so please check the website in advance.

[www.nationaltrust.org.uk/coleton-fishacre](http://www.nationaltrust.org.uk/coleton-fishacre)

## Dart estuary – saltmarsh and reedbeds

Sunday 2nd August

10am – 12 noon

South Devon National Landscape

Join our team's marine biologist for a reasonably gentle walk following down the top of the western Dart Estuary shore, taking in the views down the estuary and down into the Sharpham Marsh Reedbed on a dedicated boardwalk. Find out how the Dart Saltmarsh Restoration Project is working within the community to conserve the habitat. Well behaved dogs on short leads welcome BUT are not allowed at all in the Sharpham Marsh reedbeds. **Book** your free place at [www.southdevon-nl.org.uk/events](http://www.southdevon-nl.org.uk/events)  
Meet on the road near to The Steam Packet, Totnes, TQ9 5EW



## Snorkel safari – other dates available online

Saturday 8th August

9.30am – 12pm

(other dates available online)

Devon Wildlife Trust

Join our fully trained BSAC instructors for a snorkel safari around Wembury Bay. Suitable for beginners or more advanced snorkellers. Full kit provided. Children must be 8+ to take part.

**Booking essential**, see [www.wemburymarinecentre.org/events](http://www.wemburymarinecentre.org/events). £30 per person.

Meet at Wembury Marine Centre, Wembury. PL9 0HP.



## Slapton Ley Festival of Nature

Sunday 9th August 10am – 5pm

Field Studies Council

Festival of Nature brings together local crafters, artists and nature conservationists and enthusiasts. Games, food and music all on site.

Well behaved dogs on leads welcome, see [www.field-studies-council.org/whats-on-at-slapton-ley/](http://www.field-studies-council.org/whats-on-at-slapton-ley/) Free.

Meet at Slapton Let Field Centre, Slapton TQ7 2QP.



## Moth breakfast!

Sat 22nd August

8am – 10am

South Devon National Landscape

Discover more about the moths flying around the amazing gardens and coastal meadows of Mothecombe. See what we managed to capture overnight before releasing them unharmed back to the fields, before finishing with a pastry and hot drink for breakfast! Places limited so book your free place at [www.southdevon-nl.org.uk](http://www.southdevon-nl.org.uk) (car park charges apply)

Meet at Mothecombe beach car park, Holbeton, PL8 1LB



## LotE volunteer species surveys, Hornet Robberflies

Friday 7th August 10.30am – 3.30pm

South Devon National Landscape

Join our team on the hunt for our target species on the first Friday of each month. No previous experience needed – just a keen pair of eyes and patience! All equipment and guidance provided, records will be logged to the national database.

**Book** your free place – email [lote@southdevon-nl.org.uk](mailto:lote@southdevon-nl.org.uk)

Pick ups at Follaton House, Totnes 9.30am and Poundwell meadow car park Modbury 10am.

Meet at Mothecombe beach car park, Holbeton PL8 1LB



## Shore search survey

Friday 14th August

12.30pm – 2.30pm

Devon Wildlife Trust

Join our Shoresearch team and help monitor our fragile sea life and better understand the effects of pollution, climate change and invasive alien species. All training provided, more details and **Booking essential**, see [www.wemburymarinecentre.org/events](http://www.wemburymarinecentre.org/events). Free, no dogs please.

Meet at Wembury Marine Centre, Wembury. PL9 0HP

## Extreme rockpooling – South Sands

Saturday 15th August 1.15pm – 3.30pm

South Devon National Landscape

Explore some of the normally hidden treasures off South Sands during one of the lowest predicted tides of the year – sponges, fish out of water, crabs in hiding and jewelled anemones, to name a few. This event does require some careful crossing of intertidal rocks and will be cancelled if severe weather threatens. Suitable for older children and adults only who can walk over the rocks with confidence, NO dogs please. More info and **book** your free place at [www.southdevon-nl.org.uk](http://www.southdevon-nl.org.uk) Meet at bottom of old lifeboat slipway, South Sands, Salcombe TQ8 8LN.

## Coastal explorers – Mindfulness at Mansands

Tues 25th August 10.30am – 1pm  
South Devon National Landscape

Our monthly wellbeing walk with the team! Join Stuart to discover the beauty and nature of the coastal paths, lanes and holloways around Sharkham and Mansands. This 4 mile walk will be on the footpaths and includes a steep downhill on the coast path. Support dogs on short leads only please. **Book** your free place at [www.southdevon-nl.org.uk/events](http://www.southdevon-nl.org.uk/events) (car park fees apply).

Pick ups at Follaton House 9.35am and Paignton Asda 10am  
*Meet at Sharkham car park, Brixham TQ5 9FH*



## Women's conservation group – Everlasting pea seed gathering

Thursday 27th August 1.30pm – 4.30pm  
South Devon National Landscape

Our women's conservation group meet once a month around the Brixham area. It is a friendly group and open to any women (non-binary and trans folk welcome) from beginners to seasoned volunteers! We provide the equipment, guidance and ever important brews and biscuits. **Book** your free place (Car park charges may apply) by emailing [lote@southdevon-nl.org.uk](mailto:lote@southdevon-nl.org.uk)

Pick up - no. 12 bus terminus, central Brixham at 1.10pm.  
*Meet at Berry Head car park, Brixham TQ9 5AP*



## Dart osprey guided wildlife cruise

Tue 1st Sept 3pm – 7pm  
Mon 7th Sept 8am – 12 noon  
Tue 8th Sept 9am – 1pm  
Wed 9th Sept 10am – 2pm  
Tue 22nd Sept 9.30am – 1.30pm  
Wed 23rd Sept 10am – 2pm  
Tue 29th Sept 1.30pm – 5.30pm  
Mike Langman, wildlife guide

Enjoy a 4 hour expert guided wildlife boat trip around offshore islands and then up the Dart Estuary. We will be on the watch for wildlife from seals to kingfishers and wading birds but especially searching for the ospreys that are hunting fish during their autumn migration. **Booking essential**, [www.mikelangman.co.uk/guided-cruises](http://www.mikelangman.co.uk/guided-cruises).

Adult £46, child £35. *Meet at Kingswear Marina, TQ60SG*

## LotE volunteer species surveys Bush crickets



Friday 4th September  
10.30am – 3.30pm  
South Devon National  
Landscape

Join our team on the hunt for our target species on the first Friday of each month. No previous experience needed – just a keen pair of eyes and patience! All equipment and guidance provided, records will be logged to the national database.

**Book** your free place – email [lote@southdevon-nl.org.uk](mailto:lote@southdevon-nl.org.uk)

Pick ups at Follaton House, Totnes 9.30am and Avon Inn car park 9.45m  
*Meet at Wembury beach car park, Wembury PL9 0AU*

**LotE volunteer conservation task, Meadow creation**  
**Sunday 6th September**  
**10.30 – 3pm**  
South Devon National Landscape

Help prepare and plant up new wildflower meadows near East Soar. **Book** your free place and a pick up if you need it – email [lote@southdevon-nl.org.uk](mailto:lote@southdevon-nl.org.uk)  
Pick ups at Follaton House, Totnes 9.30am and Kingsbridge Quay 10am



Meet at East Soar car park, (National Trust), Malborough, TQ8 8PL



**Little Acorns at Coleton Fishacre**  
**Every Wednesday in term**  
**time 9.30am – 11.30am**  
National Trust

Discover the magic of the season with your little ones at Coleton Fishacre. Come dressed for messy outdoor play – whatever the weather. Little Acorn sessions are suitable for children under 5 years old. Welly walks, activities and admission are all free. No dogs please, free.  
*Meet at the cafe, Coleton Fishacre, Kingswear, TQ5 0ES*

**Tots and toddlers rockpool safari**  
**Wed 9th Sept 10am – 11am**  
**(other dates available online)**  
Devon Wildlife Trust

Join the DWT staff and volunteers for a min rockpool session aimed at preschool children. All children must be accompanied by an adult. See website for more details and to **book** - [www.wemburymarinecentre.org](http://www.wemburymarinecentre.org).  
£5 per child.  
*Meet at Wembury Marine Centre, Wembury. PL9 0HP*

**Women's conservation group Meadow management**  
**Thursday 24th September**  
**1.30pm – 4.30pm**  
South Devon National Landscape

Our women's conservation group meet once a month around the Brixham area. It is a friendly group and open to any women (non-binary and trans folk welcome) from beginners to seasoned volunteers! We provide the equipment, guidance and ever important brews and biscuits. **Book** your free place (Car park charges may apply) by emailing [lote@southdevon-nl.org.uk](mailto:lote@southdevon-nl.org.uk)

Pick up at no. 12 bus terminus, central Brixham at 1.10pm.  
*Meet at Coleton Fishacre, Kingswear TQ6 0EQ*



**LotE's Big Night Out on the Beach!**  
**Saturday 12th September 4pm – 9.30pm**  
South Devon National Landscape

It's been a while, but we thought what a better way to celebrate another great year with Life on the Edge, than rerunning Big Night Out on the Beach one more time! Join us for drop in sessions of nature inspired crafts, games, bug hunting and rockpooling in daylight. Then the sundowner parade as the sun sinks into the sea and stories after dark. Bring your picnic tea, warm clothes and stay for the evening enjoying the dark night skies of South Milton. Free, car park charges apply. See website for more details nearer the time.

*Meet at South Milton Sands, TQ7 3JR*



## Guided walks on the coast near Coleton Fishacre

Friday 25th September  
10.30am – 12.30pm

National Trust

Put your best foot forward and join the National Trust Walking Volunteers for a free guided walk near Coleton Fishacre. With clifftop views, special monuments and a chance to see local wildlife, there's a walk to suit everyone. Please wear weather appropriate clothing and footwear suitable for rugged coast paths. Well behaved dogs on short leads welcome. Free (car park charges may apply). *Meeting points, duration and difficulty ratings vary for each month so please check the website in advance.* [www.nationaltrust.org.uk/coleton-fishacre](http://www.nationaltrust.org.uk/coleton-fishacre)

## Rockpool safari

Sunday 28th September  
12pm – 1.30pm  
(other dates available online)

Devon Wildlife Trust

Join the DWT staff and volunteers to explore the rockpools of Wembury beach. All children must be accompanied by an adult. See website for more details and to [book](http://www.wemburymarinecentre.org) - [www.wemburymarinecentre.org](http://www.wemburymarinecentre.org). £5.50 per child Meet at Wembury Marine Centre, Wembury. PL9 0HP

## Avon Estuary – mudflats and saltmarsh

Sunday 27th September 10am – 12 noon

South Devon National Landscape

Join our team's marine biologist to stroll down along the Avon Estuary tidal road – discovering what makes estuaries so special. We'll have a special look at the mudflats and saltmarshes, the wildlife communities that they support and what they do for us all. Easy 3km walk on surfaced track, well behaved dogs on short leads welcome. [Book](http://www.southdevon-nl.org.uk/events) your free place at [www.southdevon-nl.org.uk/events](http://www.southdevon-nl.org.uk/events)

Meet at Timber car park, Aveton Gifford, TQ7 4JN

## Coastal explorers – Defences of the Dart

Tues 29th Sept 10.30am – 1pm

South Devon National Landscape

Our monthly wellbeing walk with the team! Join Nicky to step back in time and find out more about the past stories of the landscape around the east side of the mouth of the Dart. This 3 mile walk will be on the footpaths and includes some steep sections ( up and down) and steps. Well behaved dogs on short leads are welcome. [Book](http://www.southdevon-nl.org.uk/events) your free place at [www.southdevon-nl.org.uk/events](http://www.southdevon-nl.org.uk/events)

Pick ups Follaton House 9.35am, Paignton Asda 10am

Meet at Brownstone car park, Kingswear TQ6 0EQ



## LotE Touring Theatre – Where we meet the sea

Doors 6.30pm  
Performance 7pm

Thu 8th Oct  
The Flavel, Dartmouth

Sat 10th Oct  
Modbury Memorial Hall, Modbury

Fri 16th Oct  
Kingsbridge Community College



Life on the Edge is again bringing our touring theatre to communities across South Devon. Details of this year's show are being finalised, check our website for updates. You can expect a magnificent, innovative, and exciting piece of theatre! The performance will celebrate our relationship with the coast out of season and will be designed with adult



audiences in mind (aged 12+). Come along and be moved by stories of our iconic coastline. For more information and to [book](http://www.southdevon-nl.org.uk/events) your ticket: [www.southdevon-nl.org.uk/events](http://www.southdevon-nl.org.uk/events)

## Tots and toddlers rockpool safari

Thu 8th October 10am – 11am  
(other dates available online)  
Devon Wildlife Trust

Join the DWT staff and volunteers for a min rockpool session aimed at preschool children. All children must be accompanied by an adult. See website for more details and to [book](#) - [www.wemburymarinecentre.org](http://www.wemburymarinecentre.org).  
£5 per child.

Meet at Wembury Marine Centre,  
Wembury. PL9 0HP

## LotE@ Holbeton Apple day

Sat 3rd October  
11am – 3.30pm

South Devon National  
Landscape

Come and find us at Holbeton community orchard, where we will have pollinator inspired games, crafts and displays as part of their ever popular Apple Day celebrations.

Meet at Holbeton  
Community orchard,  
Holbeton PL8 1LW



## LotE volunteer conservation task, scrub management

Saturday 10th October 10.30 – 3pm  
South Devon National Landscape

Help carefully cut the blackthorn around the rare Goldilocks Aster growing on the cliffs near Durl Head. [Book](#) your free place and a pick up if you need it – email [lote@southdevon-nl.org.uk](mailto:lote@southdevon-nl.org.uk)

Pick ups Follaton House 9.45am Paignton Asda 10.05am  
Meet at Berry Head car park, Brixham TQ9 5AP



## Barn Owl talk at Coleton Fishacre

Wed 28th October  
1.30pm – 3.30pm

National Trust and Barn Owl Trust

Join The Barn Owl Trust in the loggia at Coleton Fishacre for a pop-up talk on all things Barn Owls. This small national charity works hard to care for and conserve Barn Owls. Learn about Barn Owl habitats and conservation, to how the extreme weather and climate change can affect them and getting a look into the feeding habits with pellet analysis. Free, National Trust admissions apply. Meet at Coleton Fishacre, Kingswear, TQ5 0ES

## Cyanotype workshop

Saturday 31st October  
10.30am – 1pm

(other dates available online)  
Devon Wildlife Trust

Use the intricate shapes of seaweed and a little bit of chemistry to make beautiful pieces of artwork that you can take home with you. We'll be learning about the different types of seaweed you can find washed up on the strandline as well as the history of cyanotypes. See website for more details and to [book](#) - [www.wemburymarinecentre.org](http://www.wemburymarinecentre.org). £12.50 per person  
Meet at Wembury Marine Centre, Wembury. PL9 0HP

## Guided walks on the coast near Coleton Fishacre

Friday 30th October  
10.30am – 12.30pm  
National Trust

Put your best foot forward and join the National Trust Walking Volunteers for a free guided walk near Coleton Fishacre. With clifftop views, special monuments and a chance to see local wildlife, there's a walk to suit everyone. Please wear weather appropriate clothing and footwear suitable for rugged coast paths. Well behaved dogs on short leads welcome. Free (car park charges may apply).

Meeting points, duration and difficulty ratings vary for each month so please check the website in advance.

[www.nationaltrust.org.uk/coleton-fishacre](http://www.nationaltrust.org.uk/coleton-fishacre)



# Keeping in touch

The website has details of all our news, events and ideas to get out and enjoy this fabulous National Landscape.



[www.southdevon-nl.org.uk](http://www.southdevon-nl.org.uk)

## Social media

Please give us a follow and mention us in your posts – we love to see your pics and what you've been up to.



[www.facebook.com/SouthDevonNL](http://www.facebook.com/SouthDevonNL)

For those who TikTok



[www.tiktok.com/@southdevonnl](http://www.tiktok.com/@southdevonnl)

Or for sharing photos



[www.instagram.com/southdevonnl](http://www.instagram.com/southdevonnl)

Check out our YouTube channel too



[www.youtube.com/@southdevonnl](http://www.youtube.com/@southdevonnl)

We produce a regular news e-bulletin and monthly events e-listings. Sign up for free bulletins on our website.



[www.southdevon-nl.org.uk](http://www.southdevon-nl.org.uk)

Alternatively, you can always email



[enquiries@southdevon-nl.org.uk](mailto:enquiries@southdevon-nl.org.uk)

or even pick up the phone, and actually talk to us!



01803 229330



## For more information

### Dartmouth

01803 834224

[visitorcentre@exploredartmouth.co.uk](mailto:visitorcentre@exploredartmouth.co.uk)

[www.exploredartmouth.co.uk](http://www.exploredartmouth.co.uk)

### Kingsbridge

01548 853195

[info@hellokingsbridge.co.uk](mailto:info@hellokingsbridge.co.uk)

[www.hellokingsbridge.co.uk](http://www.hellokingsbridge.co.uk)

### Ivybridge

01752 897035

[info@ivybridgewatermark.co.uk](mailto:info@ivybridgewatermark.co.uk)

[www.ivybridgewatermark.co.uk](http://www.ivybridgewatermark.co.uk)

### Salcombe

01548 843927

[info@salcombeinformation.co.uk](mailto:info@salcombeinformation.co.uk)

[www.salcombeinformation.co.uk](http://www.salcombeinformation.co.uk)

### Totnes

01803 862147

[info@visittotnes.co.uk](mailto:info@visittotnes.co.uk)

[www.visittotnes.co.uk](http://www.visittotnes.co.uk)

### Visit South Devon

[www.visitsouthdevon.co.uk](http://www.visitsouthdevon.co.uk)

There are lots more fabulous events on our website!

[www.southdevon-nl.org.uk](http://www.southdevon-nl.org.uk)

Photo credits: Skyflicks, Rob Skinner, Mike Langman, Farm Wilder, Simone Odaranile, Geoff Foale, Harry Baumer, Joe Burt, Maisie Pickard, Steven Falk, Andrew Whitehouse, Paul Naylor, John Walters, John Nightingale and Dave Bassett. All other images © South Devon National Landscape. Designed by South Hams District Council. Printed by [www.brightsea.co.uk](http://www.brightsea.co.uk)

